

LPG is one of those subject matters that sounds essential till you're dwelling with the machine. The boiler works, the radiators warm up, sizzling water seems to be after you need it, and existence goes on. Then a thing changes, possibly the power drops, the flame behaves oddly, otherwise you're making an attempt to plot a flow to an LPG setup. Suddenly you're hearing terms like regulator, bulk tank, condensate, purge, commissioning, and the more primary Gas safeguard certificates begins exhibiting up in conversations.

This instruction manual is written for that second while you desire the actual graphic. What an LPG boiler is, why the set up is handled another way from ordinary gas, what a fine Boiler Installation looks as if in follow, and how Boiler Service and Boiler Repair generally tend to play out. I'll additionally conceal comparable techniques you may have along it, like Gas Fire Installation, Gas Cooker Installation, and the sensible Plumbing and Aircon judgements that in many instances arise within the same task.

What LPG definitely potential for a boiler

LPG stands for liquefied petroleum gas. In such a lot domestic settings inside the UK, it's by and large offered as propane or a propane mixture, brought both as bottles (cylinders) or by means of a bulk tank. The key point is that LPG is kept as a liquid underneath strain and launched as a gas to feed the appliance.

A boiler expects a particular gas style and a selected gas strain on the burner. That method an LPG boiler is designed and installation to burn LPG desirable, with the excellent injector sizes, gas keep an eye on settings, and combustion traits. If human being attempts to run a traditional gas boiler on LPG with out top conversion and setup, you possibly can grow to be with poor combustion, soot, unreliable ignition, and in worst cases, hazardous situations.

In the factual global, laborers repeatedly confuse "it lights" with "it's accurate." A flame can look even if combustion isn't always most popular. That's why commissioning checks, along with a combustion verify and suited documentation, rely extra on LPG than many home owners predict.

Cylinder or bulk tank: the two routes to LPG

When folk discuss about LPG, they characteristically suggest the gasoline, however the grant methodology influences the total formula layout.

With cylinders, you ordinarily have a group of bottles in an outside cage or enclosure, hooked up to the grant line with regulators. The boiler then attracts gas as wished, whereas the equipment makes use of regulation to maintain secure force. The installer also necessities to devise for bottle positioning, access for deliveries, and trustworthy separation distances from ignition sources.

With a bulk tank, the tank sits outdoors, and the gas is offered as a result of an underground or exterior pipe run, pretty much with vapour withdrawal depending on the setup. Bulk tanks generally tend to offer a greater continual supply, and for top demand properties (or [20185-third-4a90-80cb-93180512668c](#)), the logistics and operating styles can also be more convenient.

If you're wondering, "Will I consider the difference in every day use?" you would. Cylinder setups can also be fantastic for lots homes, but call for peaks like chilly snaps and nighttime workouts are while installers take note of pipe sizing, regulator variety, and method balancing. Bulk promises can delicate those peaks, although they arrive with their personal set up necessities and ongoing control.

What alterations for an LPG boiler installation

An LPG Boiler Installation just isn't just "swap the boiler and attach a pipe." The combustion approach, the gasoline coach, condensate routing, and once in a while even the flue mindset must be judicious conscientiously.

The installer should plan the entire path of gas and combustion items from furnish to burner to discharge. On LPG, gas pressures and flow features can vary from pure gasoline. That manner the force trying out, regulator and governor exams, and appliance-detailed settings are significant to getting the accurate flame pattern and safe operation.

Flues additionally come into play. Many modern day LPG boilers are room-sealed, utilizing a balanced flue manner wherein air is drawn in and combustion gases are expelled by way of the flue. The designated flue configuration relies upon at the boiler edition and the assets design. A tidy, neatly-supported flue run things for carrier access and long-time period reliability.

Condensate is some other arena worker's underestimate. Condensing boilers produce condensate for the duration of conventional operation. On LPG and average gasoline techniques alike, you needs to have the correct course and discharge strategy, pretty in freezing climate. If the condensate path is terrible, you'll be able to get repeated shutdowns. Those shutdowns should be would becould very well be incorrect for "a boiler worry" whilst the difficulty is correctly condensate control.

Gas pipework, regulators, and tension stability

On LPG, the regulator is the unsung hero. It takes gas from the storage formulation and promises it to the boiler at a controlled pressure. If that stage is wrong, the boiler also can begin, however it could possibly conflict lower than load.

Pipework sizing could also be impressive. Undersized pipe runs can create strain drops while the components demands greater gasoline. This is most significant during high sizzling water draw or while radiators name for heat at the related time.

During a relevant installing, the fitter will examine and make sure gas soundness and power in the ranges detailed for the equipment. They also need to confirm the pipework is established with top helps, leak trying out, and right components. Good Plumbing requirements practice the following, in spite of the fact that you possibly can mentally separate "pipework" from "gasoline."

If you've ever obvious a gasoline line routed round stumbling blocks with awkward bends and bad entry, you'll be aware of why service and Boiler Repair later became extra painful. LPG installations are worthy doing with preservation in brain, because regulator areas and isolation valves still need checking and entry.

Commissioning: wherein "it runs" will become "it's dependable"

Commissioning is the step that turns an installation from a mechanical connection into a operating heating equipment you might trust. For LPG, commissioning often involves checking ignition sequence, verifying combustion, and confirming that the boiler is mounted for the right gas variety and operating pressures.

A excellent Gas Safety Check seriously is not a paper endeavor. It's tied to the reality of what the burner is doing. If the combustion examine shows disorders, that's where the installer adjusts settings or addresses themes ahead of the boiler is signed off.

On a neatly-run task, the results looks like this: strong burner operation across call for modifications, no ordinary flame behaviours, no ongoing lockouts, and a clear handover explaining what become geared up and what the home-owner may still look forward to.

This also is wherein the Gas safeguard certificate comes in, when required for the paintings performed. The accurate office work can range by using process fashion and area, but the idea stays: the manner may want to be tested, documented, and communicated.

Boiler Service on LPG tactics: what correct looks like

Even in case your LPG boiler is working flawlessly, established Boiler Service is what assists in keeping it that way. LPG combustion is usually very professional, but any burner formulation is still a mechanical set of components uncovered to warm, soot deposition (if combustion drifts), and fashioned wear.

A able service typically checks the important thing safety presents and the combustion performance. Depending at the boiler variation, which will incorporate inspecting and cleaning interior accessories, checking seals and pipe connections, verifying the flue path is apparent and efficaciously fitted, and assessing how the burner behaves.

One carrier consult with might also be the moment you hit upon "it's been slowly getting worse." I've obvious boilers that still ran, but the ignition time had crept longer, or the flame signal was once marginal, superior to occasional lockouts. When caught early, it's routinely a trustworthy repair, instead of a complete replacement scenario.

Service also concerns for owners who have distinctive appliances going for walks off the related gasoline give, like a Gas Cooker Installation or an outside Gas Fire Installation. The demand patterns can have an effect on how the offer gadget behaves, distinctly while the gas is shared at bound aspects in the formulation.

Boiler Breakdown: what has a tendency to move incorrect, and why it matters

When LPG boilers spoil down, it's tempting to deal with it as a random experience. In apply, many LPG topics observe patterns tied to combustion, stress steadiness, condensate, or sensor functionality.

Here are the various disorders I've considered come up sometimes inside the box, those that generally tend to point out up all through bloodless weather or after a interval of heavy use.

1. Ignition concerns, usually associated to portion wear, burner circumstance, or gas source steadiness
2. Lockouts by reason of faulty sensors or airflow and flue linked matters
3. Fluctuating burner overall performance whilst fuel rigidity regulation is off or pipe runs are constrained
4. Condensate drain blockages causing shutdowns and mistakes codes
5. Faults which might be "boiler-associated" yet in fact as a result of the external give gadget, like regulator topics or valve get admission to troubles

If your boiler is breaking down, the primary real looking transfer shouldn't be to reset it generally. Frequent resets can mask the trend and frequently worsen things if there's a short-term fault. Better to be aware the error code, how the boiler behaves before the fault, and whether or not anything else makes use of LPG at the equal time. That context supports for the time of Boiler Repair.

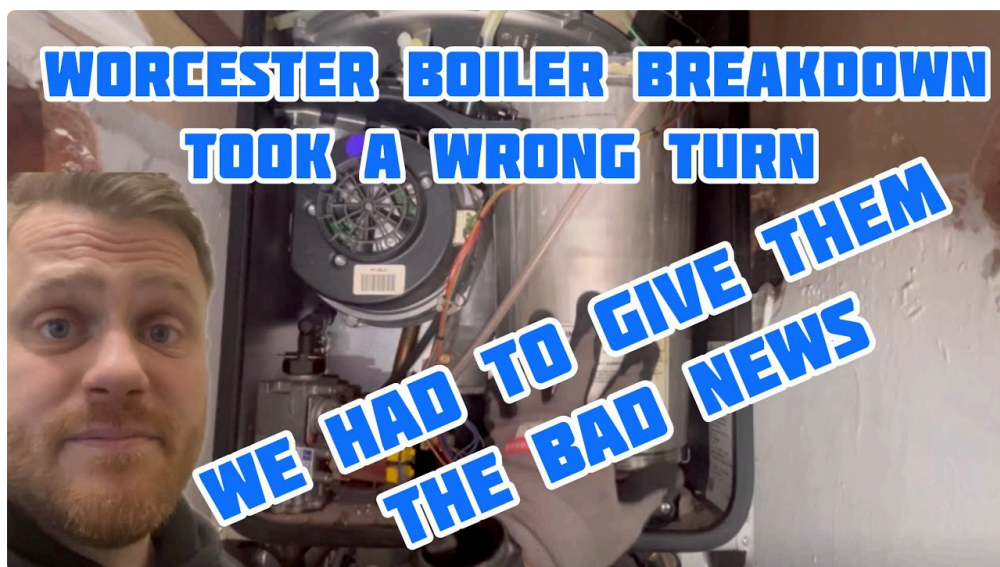
Boiler Repair: the big difference between a quickly repair and a ideal fix

Boiler Repair is in some cases offered as a primary swap and cross. In truth, there's a enormous change among exchanging a area since it failed and solving the root intent.

For example, a failed ignition aspect is likely to be the symptom, at the same time as contamination or combustion flow is the underlying purpose. On LPG, a combustion component can feed into sensor readings, flame stability, and repeated shutdowns. So a tight restore doesn't just update, it verifies. After a fix, the components must be tested and, the place correct, combustion parameters checked.

Also, the restore technique relies upon on the age and condition of the boiler. If you've had an LPG boiler operating for a few years, you would face the "fix vs change" selection. A stable engineer will by and large discuss it using in plain terms: what they've chanced on, what it might likely can charge to fix right, and what probability stays if the underlying condition is worsening.

If you might have an elderly loved one at residence, or you're in a property that wishes strong warmness to hold pipes and bathrooms functioning, the urgency adjustments the making plans. It's not virtually [Power Flush Essex](#) convenience, it's about stopping secondary considerations that bring about more luxurious repairs later, like frozen condensate routes or water damage.



Gas Fire Service and Gas Fire Installation, and how LPG suits in

Many families maintain a fuel hearth as a decorative function or supplementary warmness. When the house makes use of LPG, that gas hearth have to be set up for LPG, with top supplies and good commissioning.

Gas Fire Installation contains equivalent matters to boilers, but with different menace points. The flame trend, air flow issues, and flue routing range from a boiler's balanced formulation. A Gas Fire Service is just as substantive on account that burners and aeration portions can get clogged, specifically wherein airflow fluctuates within the room.

One overall owner of a house statement is "the fire seems advantageous, it just doesn't burn proper prefer it used to." That probably a offer rigidity flow, a keep an eye on challenge, or burner contamination. It might also be an setting up compromise made before, like a flue termination or wrong clearances. A right kind Gas Safety Check for the fire will have to cope with that, no longer in basic terms verify it lighting fixtures.

Gas Cooker Installation on LPG: shared demand, shared considerations

Gas Cooker Installation will probably be basic whilst it's a brand new have compatibility, yet on LPG it's still component of the fuel process snapshot. If a belongings has both a cooker and a boiler, they could draw at the comparable supply. In busy households, cooking call for overlaps with boiler heating cycles, exceptionally inside the evenings.

A wonderful installation includes most excellent injector variety, risk-free pipe connections, incredible shutoff valves, and verification of secure operation. It's additionally price interested in extraction and air flow. While ventilation isn't merely a "gas fire issue," the whole room atmosphere topics for trustworthy operation.

If you ever scent gasoline, that variations every part. Don't "to find it later." Treat it as an urgent security challenge and phone a official. LPG is heavier than air, so leaks can collect low to the flooring relying at the setup. That makes early detection and appropriate installing even more vital.

Supply management for %%!%%8ee20185-0.33-4a90-80cb-93180512668c%%!%%: the burger van gasoline example

It's uncomplicated to believe LPG is purely family, yet I've labored with small trade setups too, such as a burger van gasoline installing. Those systems might be used seriously all over events, and the trend of demand isn't the same as a dwelling.

What amazed the proprietor in one case was how directly bottle inventories turned a sensible bottleneck. The machinery could possibly be stable, but the agenda for exchanging cylinders, regulators, and risk-free pipe runs will become a logistics hindrance. A decent LPG setup for a burger van additionally capability thinking about how the device is stored, how it's blanketed from actual damage, and how the operator can access shutoffs accurately.

The takeaway isn't "business is more difficult." It's that call for styles rely. A home-owner may possibly run the boiler for hours, but a company may perhaps provide bursts of excessive call for. Both can disclose weaknesses in grant making plans.

The hidden links to Plumbing and Aircon decisions

Heating methods hardly ever are living by myself in a belongings. Plumbing layouts have an effect on pipe routing, condensate discharge, and get admission to for carrier work. When you're planning an LPG boiler installing alongside a preservation, which you can retailer yourself a variety of bother by interested by carrier house early.

For illustration, while you're relocating radiators or running new scorching and chilly water pipework, the boiler function might be sure how genuinely one could direction the condensate line devoid of awkward turns. Awkward condensate runs are in which you see repeated things during freezing weather, and the price of solving it later is often top than doing it right inside the first position.

Air Conditioning and Aircon systems also come into the communique in brand new buildings. While an Aircon unit is not really through LPG, the installing can change airflow styles around the boiler and flue termination region. It can also impression inner temperatures, which ameliorations how normally the heating manner cycles. More biking will increase wear and will make minor faults train up sooner.

In short, when you're planning upgrades, it's value having your trades coordinate. Even a essential dialogue like "in which will the Aircon pipe run pass relative to the flue discharge arena" can steer clear of a messy

remodel.

Choosing an installer: questions that on the contrary matter

A strong LPG install isn't mysterious, it's cautious. If you're interviewing a provider for Boiler Installation, ask questions that disclose how they work, not simply what they payment. Here's what I'd hear for.

- Will you commission the boiler properly and carry out combustion exams for LPG
- How do you look at various fuel soundness and ascertain stress stability for the delivery technique
- Where is the condensate route planned, and what occurs if it freezes
- What bureaucracy might be provided, such as a Gas protection certificate if required
- If trouble seem later, how do you control Boiler Service and Boiler Repair practice-ups

You're attempting to find any person who sounds calm about protection and formulation, now not any person who treats commissioning like a immediate tick container. The great installers can give an explanation for what they do in a manner that makes experience, with out speeding you.

Keeping LPG running easily day to day

Homeowners do not desire to grow to be gasoline engineers. But you do desire to detect patterns. If the boiler starts offevolved behaving in a different way, that subjects.

If you get an intermittent fault, try and note the situations. Does it appear at convinced instances, while hot water is used closely, or solely after the heating has been strolling for hours? Does the fault show up after the cooker has been on, or after the LPG cylinders had been replaced? Those observations can assist an engineer diagnose give and legislation matters faster.



If you scent gasoline at any factor, deal with it as urgent. Ventilate if that's protected to accomplish that, turn off the appliance if you could do so properly, and speak to the appropriate experts. LPG leaks can be severe, and it's miles not at all a "permit's be patient" situation.

LPG vs typical gas: what vendors many times hassle about

People oftentimes ask even if LPG boilers are "much less legit" or "extra difficult." From a practical viewpoint, reliability comes right down to accurate appliance matching, perfect commissioning, and ongoing

carrier.

If an LPG gadget is set up and tuned accurately, it should perform thoroughly. The truly danger is while the installation is rushed, settings are approximate, or safety assessments are minimum. LPG makes those shortcuts more visible considering the fact that combustion relies upon on gasoline characteristics and secure birth.

There's additionally a value point of view. LPG tariffs and cylinder logistics can effect walking money decisions. That's a separate communique from the engineering side, yet it influences picks like thermostat schedules, warm water utilization, and no matter if you could keep in mind advancements like more beneficial controls. Just be counted that any efficiency upgrade nonetheless desires to sit on best of a riskless and thoroughly set process.

Planning enhancements: while you would want multiple visit

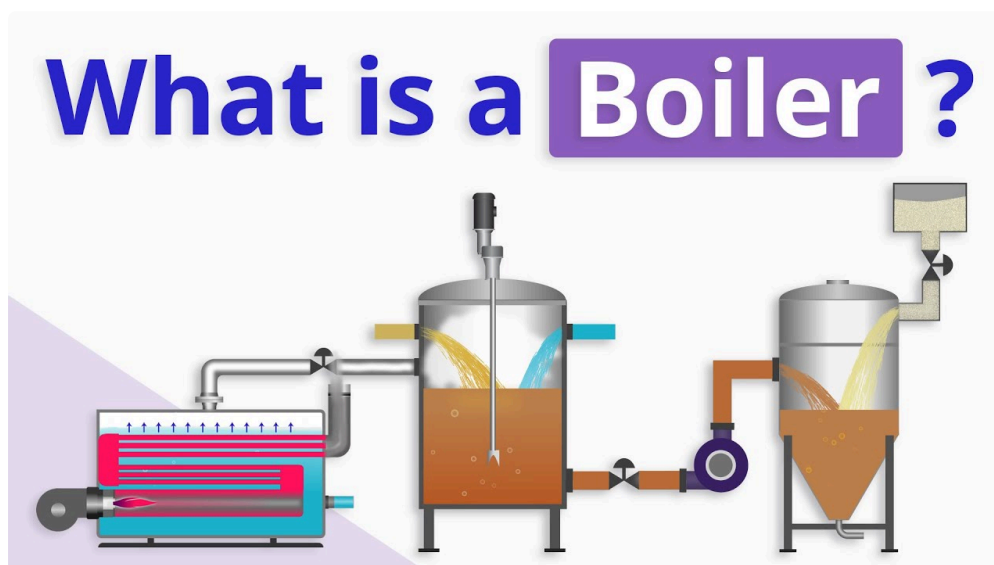
If you're shifting to LPG, exchanging a boiler, adding a Gas Cooker Installation, or upgrading a Gas Fire Installation, timing concerns. It would be clever to coordinate the fuel offer variations first, then in good shape home equipment, then fee the entirety in the best order.

A professional plan additionally money owed for get admission to for carrier, the skill to isolate sections adequately, and the way one could take care of the supply during the changeover length. In some cases, it's possible you'll desire momentary arrangements. In others, the paintings is executed in a tight window. Either method, a very good installer will communicate you simply by what to expect and what the disadvantages are.

The real looking certainty of service calls

When you name for aid at some point of a Boiler Breakdown, your function is two issues: get risk-free operation restored, and reduce the chance of the drawback returning.

A normal remarkable Boiler Repair discuss with will include questions on signs and symptoms, tests of the factors such a lot most probably to be concerned, after which verification trying out. If the fault touches fuel deliver and tension legislation, you could see additional tests outdoors the boiler itself.



If the engineer reveals some thing that indicates the method has not been commissioned properly within the previous, they'll advocate differences and perfect re-commissioning. That can experience frustrating, above

all when you idea "it worked earlier than," but that is broadly speaking the in simple terms means to end the cycle of habitual faults.

Final concepts you can actually use

LPG boilers are thoroughly manageable, and plenty of homes run them everyday without a drama. The big difference among a stable formula and a not easy one is the high-quality of the installing, the thoroughness of commissioning, and how consistently Boiler Service and tests are handled.

If you're planning a replace, don't awareness simply on the boiler value. Look on the entire LPG setup: delivery formula, regulator resolution, pipework ideas, condensate planning, flue routing, and the safe practices assessments subsidized up with transparent paperwork.

And once you're already living with the device and also you're noticing alterations, treat the ones indicators severely. An LPG boiler can probably be mounted quickly, however the supreme results come whilst the fault is clinically determined safely, now not simply patched.

If you'd like, tell me no matter if your LPG setup makes use of cylinders or a bulk tank, and regardless of whether you're going through a particular Boiler Breakdown symptom or making plans a Boiler Installation. I can tailor the key tests and questions to your trouble.