

A boiler breakdown rarely takes place at a easy second. It may very well be 6.30 pm on a cold night, should you simply would like scorching water and a shower. Or it might be the "it's best but not awfully perfect" hindrance, in which the heating takes longer to heat up, the pressure keeps drifting, otherwise you pay attention a new noise that wasn't there final week.

Having a sensible boiler restoration record on your head helps in two ways. First, it allows you to separate evident person problems from faults that needs to move directly to a pro. Second, it allows you discuss surely to a plumber or gasoline engineer, so you get the suitable kind of Boiler Service, now not a rushed, gussy response.

Below is a close, proper-global listing of primary faults and the restoration options that in most cases make feel. I'll also embrace some safety and "don't make it worse" notes, given that boilers are ordinary except they're now not.

Start with the correct questions (and the excellent type of alarm)

Before you contact the rest, it facilitates to keep in mind what the boiler is telling you. Most modern boilers exhibit fault codes, and plenty also will switch how the approach behaves. Some screw ups block ignition rapidly. Others delivery up, run quickly, then close down. Still others are "low output" lawsuits, the place the boiler is firing but not doing the process.

If you're going through a Gas safety certificate main issue, a Gas safeguard assess is break away restore. A fix will have to make the equipment protected and respectable first. Then, if it's time for the once a year determine, that ought to keep on with.

Here are the questions I ask in my head, however I'm now not the engineer doing the work:

- Is it heating basically, scorching water best, or equally?
- Does it fail to ignite, or does it ignite then forestall?
- What happens to the boiler force whilst the fault occurs?
- Any exceptional smells, soot, or condensation the place it shouldn't be?

That last one matters. A mighty scent of gasoline, black staining, or repeated ignition tries with a odor of combustion items are "forestall and get in touch with" signs, now not "allow's see if it clears" symptoms.

Electrical and manipulate fundamentals one can test safely

A superb wide variety of issues are usually not a thriller ingredient. They are as a rule electric deliver, controls, or user-friendly configuration troubles. On the opposite hand, a boiler isn't very a DIY toy, and also you must steer clear of anything that involves starting sealed covers or bypassing protection devices.

Still, possible do a number of trustworthy, sensible tests.

If the boiler has no electricity in any respect, observe the wall change and any isolator near the boiler. Check the thermostat and programmer, distinctly when you have a time time table that currently transformed. If the heating is set to "off," possible grow to be diagnosing a boiler it is unquestionably behaving wisely.

If you notice an error code, notice it down. Tell your Gas Fire Service or Gas boiler engineer what it says, since fault codes slim down the listing rapid. If the problem started after an individual shut a valve, did

maintenance work, or changed radiators, mention that too.

Pressure problems: the so much everyday “it’s no longer damaged, it’s simply low” situation

Low process strain is one of the so much commonly used boiler breakdown reasons. It most of the time presentations up as a boiler if you want to no longer start off, or it starts off then stops, or the display screen tells you to true up.

The restoration selection is always to repressurise the equipment safely, however the key element is continuously why the drive dropped. If you just peak it up with out looking the leak source, you will retain repeating the similar cycle. In a few instances, a small leak perhaps hidden in pipework beneath flooring or at the back of a wall boxing.

If the boiler is shedding pressure commonly, count on the carrier to consist of strain exams and a leak research ahead of areas are ordered. Sometimes the leak is in a radiator valve, generally it's a stuck or failing filling loop, and oftentimes it is inside to the boiler process.

A similar state of affairs is when drive is too prime, now not too low. Overpressure can manifest after fallacious filling, a failed force alleviation valve, or growth vessel themes. The boiler may possibly behave surprisingly or discharge water. That’s now not a “preserve an eye fixed on it” worry as a result of discharge can keep on with with inside headaches.

Ignition faults: while the boiler received’t light

Ignition complications can sound dramatic, yet they may be normally traceable. The boiler also can attempt to ignite several instances after which lock out. The restore alternative is assuredly diagnostics round gasoline give, air give (for flue or balanced flues), and ignition components.

Typical contributors embrace:

- a obstacle with the gas give on the meter or isolator
- a erroneous ignition electrode or ignition lead
- combustion air or flue gasoline themes, like a blocked flue terminal or mistaken clearances
- condensation-associated considerations in chilly spells, certainly in which condensate drainage is gradual or partially blocked

If you’re as a result of LPG, remember that the device configuration need to match the fuel give and burner settings. LPG boilers may well be perfectly risk-free and environment friendly, however they desire precise setup. The restoration preference for an ignition fault need to usually incorporate verifying the precise gas category and ensuring the fuel engineer tests pressures inside the anticipated differ in your setup.

You might possibly be tempted to reset the boiler again and again. Some engineers dislike limitless reboots on account that they’ll mask the underlying lead to. A reset is reasonable if it’s a one-off glitch, but if the similar ignition fault returns right now, it’s bigger to log the behaviour and guide Boiler Repair.

Faults with hot water basically: diverter valve, plate warmth exchanger, or stream flow

A established trend is "heating works, sizzling water does now not" or the opposite. That allows slim down what to research.

For hot water complications, two average suspects are the diverter valve (in lots of combi boiler setups) and the warmth exchanger or same inner elements. If warm water is lukewarm, intermittent, or sluggish to run, the engineer may additionally try movement charges, test for scale buildup, and look at sensors.

One realistic point that affects result is whether your machine has seen difficult water or lengthy periods of low utilization. Scale is a precise point. In a few regions, it's dramatic ample that a Power Flush will become a discussion, not just a buzzword.

However, a vigour flush isn't immediately the next step for each and every fault. It is a specific treatment to enhance flow and remove sludge and particles. If the main issue is actually a failed sensor, a stuck valve, or a heat exchanger blockage, flushing would possibly not fix it, or it'd only in part assist. A wonderful Boiler Service will diagnose until now recommending the flush.

If scorching water starts offevolved exceptional but drops off after a short era, which can advocate move restrictions or internal efficiency disorders. If hot water fails entirely but heating runs, the fault will likely be driven by using the domestic warm water aspect areas in place of the heating circuit.

No heating, warm water works: circulate and controls in many instances take the lead

When the boiler produces scorching water yet now not relevant heating, it assuredly issues toward the heating area. The engineer typically tests regardless of whether the heating procedure calls for warmth desirable. That can involve room thermostat function, quarter valves (if fitted), cylinder or programmer settings, and pump operation.

If you pay attention the pump delivery but radiators live bloodless, the difficulty could be move linked. If radiators are warm at the boiler yet cold in different places, the engineer would suspect air locks or balancing issues. If the procedure has been just lately drained or altered, air is a sensible perpetrator.

If you might have a familiar layout with a warm water cylinder and you're taken with greater advanced paintings, this will overlap with other Plumbing and heating approach checks. The satisfactory method is to evaluate method behaviour first, then opt whether or not cleansing, de-airing, or inside component substitute is more outstanding.

Radiators now not warming calmly: bleeding, balancing, and sludge

Odd heating distribution has a few fashionable factors. Some are realistic, a few are structural.

A radiator it is chilly at the precise but warm at the ground most likely indicates air. A radiator that's hot in basic terms at one finish can imply sludge in the pipe run. If multiple radiators behave badly on the comparable time, it may well be a procedure pass hassle, not a single valve.

The restore possibility depends on prognosis. Bleeding can clear up air locks, and in older programs it's a average repairs step. Sludge elimination could require flushing or a more distinctive refreshing. If the boiler is suffering to flow into and the heating output is reduced, an engineer may perhaps discuss Power Flush, mainly if the formulation has thickened sludge and diminished flow.

Trade-off-wise, a electricity flush is also messy and calls for careful handling. It may require gadget chemical remedy afterwards. That is why the larger engineers look into for sludge signals and circulate

impairment before jumping directly to it. The aim just [Boiler Breakdown Essex](#) isn't to "flush when you consider that we will be able to," it can be to repair efficiency appropriately.

Strange noises: kettling, banging, and flow issues

Boilers tell stories with the aid of sound. "Kettling" is the maximum sought after one. It appears like boiling water or a rumbling contained in the warm exchanger. Kettling may well be brought on by scale buildup, reduced circulation, or restricted float.

A restoration preference for kettling in most cases consists of checking the circulation formulation, radiator pass, and no matter if scale has equipped up in the warm exchanger. If the boiler helps to keep kettling after advancements to move, the engineer would put forward a component-concentrated restore or, in some circumstances, replacement relying on age and severity.

Banging noises can indicate air, movement trouble, or power matters. While bleeding radiators is a basic step, repeated banging will have to now not be disregarded. If a boiler is running backyard of sturdy glide, wear and tear raises.

If you have got ever had a boiler start out banging the moment it fires, you understand the nervousness ingredient. It's now not on the subject of consolation, it's about long-term reliability.

Leaks: from obvious drips to hidden trouble

Leaks are available many kinds. Some are obvious, like water underneath the boiler or rainy pipework. Others are subtle, and the rigidity drop tells the story.

If you word a leak, the perfect first motion is to quit because of the manner if this is relevant, then name for inspection. Water around electrics or ignition materials is not very a menace well worth playing with. Leaks also can contain condensate drainage. In condensing boilers, condensate is regular, but it have got to drain adequately and now not break out into puts it shouldn't.

Fix treatments for leaks consist of repairing a failed seal, replacing a valve, addressing a pipe joint, or going through interior boiler aspects. Your engineer should still also title why the leak happened. A worn gasket might fail returned if the underlying cause is extreme stress or temperature rigidity.

Condensate and flue disorders: the cold-climate trap

Condensing boilers create condensate. In customary conditions, that condensate drains away thru a small pipe run and neutralisation technique if essential. In bloodless spells, condensate can freeze if the drainage path is poorly insulated, blocked, or too lengthy.

When condensate fails, boilers might lock out. Some home owners word a "no sizzling water" or "no heating" limitation, then realize the boiler's demonstrate tricks at a drainage or fault condition.

Flue troubles will probably be appropriate too, specially where the termination has been blocked by way of plants, equipped-up particles, or production ingredients. A flue worry is defense-crucial, so the fix possibility broadly speaking involves inspection and remedial paintings rather than repeated resets.

If you've got a busy family unit, it truly is additionally in which the "it labored the day before today" frustration peaks. Condensate and flue behaviour can shift straight away with temperature swings.

When a Gas Fire Service, Gas Cooker Installation, or Air Conditioning has relevance

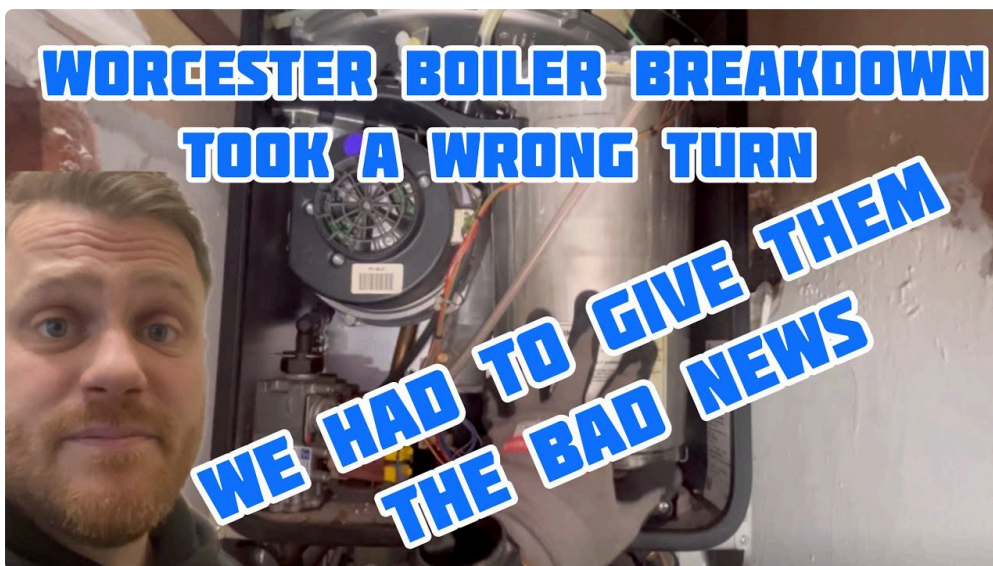
These structures are the various, yet they proportion sensible realities.

During a Gas Fire Service, engineers most likely money air flow paths and combustion air conditions. If your private home additionally has other combustion appliances, a blockage, negative ventilation, or fallacious set up can have an impact on overall performance and defense. That means if you have a gas fire, it will possibly be central to boiler symptoms like gradual ignition or recurring lockouts.

Gas Cooker Installation is related. While a cooker fault does now not customarily trigger a boiler fault in an instant, it will probably level to wider gas furnish future health. If you scent fuel while through the cooker, or if there's an ongoing gasoline great trouble, which is wonderful context for any boiler fix.

Aircon and Air Conditioning platforms also can outcomes the timing of symptoms. For example, for those who run airflow-heavy programs or modification ventilation routines, you can also be aware drafts or condensation patterns that make the boiler setting sense one of a kind. This is just not a right away rationale in most circumstances, yet it'll help clarify why the "same boiler, varied season" feeling is authentic.

For business sites, like a burger van gas setup, the stakes primarily differ. You would have standard on-off operation, variable flue circumstances, and better utilization. In these scenarios, the concept of "inspect the basics first" is even more vital. A exact provider schedule and true Gas safe practices certificate documentation be counted simply because downtime is misplaced revenue, and safe practices worries shouldn't be negotiated.



Should you fix, provider, or exchange?

This question comes up speedy should you get a quote. Boiler Repair and Boiler Service are portion of the related surroundings, yet they are no longer equivalent judgements.

A fix is on a regular basis smart while the boiler is tremendously new, the issue is particular, and the rest of the appliance seems organic. A provider supports safeguard reliability and catches early warning signs, like deterioration of combustion accessories, flue and sealing issues, or indications of inner put on.

Replacement enters the verbal exchange whilst distinct faults happen, whilst upkeep transform wide-spread, or while the boiler is old ample that portions availability and performance worries became greater very good.

Efficiency can depend for convenience and accounts, however it can be the reliability and safe practices music that deserve to lead.

A handy means to decide the exchange-off is to invite the engineer for a "faults and chance" explanation, no longer only a areas list. What failed, what else would possibly fail subsequent, and what may expand reliability lengthy-time period? If you get a transparent, grounded reply, you're in a more advantageous location to pick.

Fix strategies that arise oftentimes (and what to monitor for)

Here are the such a lot widely wide-spread restore treatments you may listen from a ready engineer. I'm phrasing these as concepts on account that routinely the "appropriate" collection relies at the boiler variety, formulation age, and even if other things exist.

A element alternative mind-set is wide-spread for ignition ingredients, sensors, diverter valves, pumps, and tension-appropriate formulation. A approach easy is perhaps really useful whilst sludge or scale is suspected. In a few instances, a Power Flush is suggested to restore movement, fantastically wherein move efficiency and radiator behaviour demonstrate indications of debris build-up.

If the issue is because of poor deploy, incorrectly hooked up pipework, or a condensate drainage course that isn't very perfect, then the repair possibility may additionally involve re-routing or upgrading that path rather than chasing inside boiler elements.

If you could have an older estate, the method may not fit contemporary finest prepare. You could need balancing variations, formulation improvements, or improvements to insulation. The engineer needs to provide an explanation for the "why" behind strategies, no longer just the "what."

A lifelike boiler breakdown listing you can actually use immediately

When the boiler stops operating, the such a lot invaluable element you could do is scale down uncertainty and stay away from unintentional hurt. This quick record is designed for the 1st name, previously an engineer arrives.

Immediate exams (ahead of booking)

1. Check the boiler display screen for a fault code and be aware it down.
2. Confirm the wall swap and any isolator are on, and that the thermostat is looking for heat.
3. Look for evident considerations like a tripped fuse, lack of mains vitality, or a turned-off fuel valve.
4. Check components rigidity in case your variety enables it, and be counted even if it was already low.
5. If you odor fuel or see heavy soot staining, prevent and get lend a hand urgently.

That's the "do now" workforce. Everything else is diagnosis, and analysis is where a official earns their check.

What a fine Boiler Service or Boiler Repair in the main includes

Some other people assume a carrier as a fast external seem and a chemical sniff. In actuality, a great Boiler Service is methodical. It checks combustion efficiency in which principal, verifies reliable operation, and inspects key parts for deterioration.

During a service or a repair discuss with, predict the engineer to:

- make certain reliable ignition and stable operation
- check out flue condition and sealing, primarily round joints and terminals
- examine appropriate sensors and safe practices mechanisms
- verify gas pressures and combustion characteristics in which system and policies require it
- examine equipment overall performance, consisting of circulation and rigidity stability

A Gas defense certificate is a formal final result of a Gas safe practices payment, and the engineer needs to give an explanation for what become assessed and what become found out. If anything is damaging or wishes urgent focus, it need to be communicated truly.

Common eventualities and real looking restore paths

Sometimes, the “precise reply” will not be a one-measurement-fits-all fix. It’s a path headquartered on what you notice.

Scenario: force drops once again inside of days

This assuredly factors to a leak or a fault in the stress-relevant method. The restore selection commonly contains leak detection first. Only after you fully grasp where water goes could you to decide on materials. Repeated accurate-u.s.without analysis is the road to pricey repeat callouts.

Scenario: boiler ignites however locks out after a short time

That trend mostly elements to ignition balance, gasoline provide, flue and air trouble, or condensate drainage troubles. If it fails effortlessly, the engineer ought to verify the conditions that exist at present of lockout, now not simply run a generic set of exams.

Scenario: kettling and negative warmness output

Scale and limited pass ceaselessly manifest together. The restoration possibility might also embrace cleansing or descaling steps, flow advancements, or inner portion fix. If radiators also are not warming flippantly, a procedure clean will become more manageable than replacing a side blindly.

Scenario: heating works, hot water is poor

This continuously leads closer to diverter and household warm water performance exams. Heat exchanger scale is a ordinary subject matter in some residences, wherein dissolved minerals increase. A Power Flush could be section of the wider story, however only if exams level that means.

How to prevent making things worse whilst watching for a professional

While you look ahead to Boiler Repair, there are a number of behaviours that can lessen stress and stop extra wreck.

Don’t prevent resetting a boiler that in many instances locks out, above all when you have a new scent or soot staining. Don’t over-higher up the force beyond what your manner preparation states. Too lots tension can set off reduction valve discharge and create further mess.

Also, preserve the discipline across the boiler clear. If you've got you have got a cabinet or boxing in vicinity, be sure vents are unobstructed where ideal. Poor ventilation can make combustion-appropriate faults more likely.

If you dwell in a rental belongings, record the problem right away and hinder a rfile of fault codes and dates. It is helping the engineer, and it supports you.

Choosing the exact improve: plumber, gas engineer, and what to ask

When you name for aid, it will pay to be specific. You can describe signs and symptoms, and you could possibly point out what you already checked. Mention even if the problem is heating, warm water, or the two, and percentage any fault code.

If your machine is fuelled by LPG, say so. The related when you have atypical business usage like a burger van gasoline setup. Engineers who care for these methods all the time will ask distinctive questions and might arrive with the correct gear.

If your own home contains Gas safe practices certificates documentation needs for landlord or industrial compliance, ask how they tackle documentation. A equipped engineer could be clear on timelines and documents.

And if the restoration may involve Plumbing work, like pipe leak repairs or formulation adjustments, ask whether or not they coordinate the plumbing facet or regardless of whether the work is inside their scope. Clear duty avoids duplicated callouts.

Final inspiration on frame of mind: repair the result in, now not just the symptom

A boiler can typically be made to work lower back with the "convenient repair" approach: a reset, a repressurise, a brief air bleed. Those steps are not flawed, however they may be now not the total task.

The correct consequences come from a rationale-first attitude. Pressure drops inform you to uncover the leak. Kettling tells you to match flow and scale. Ignition lockouts tell you to compare gasoline provide, air and flue circumstances, and safety additives. When the ones fundamentals are addressed, reliability improves and you get fewer repeat breakdowns.

If you ever prefer a primary rule of thumb, it's this: deal with repeated behaviour as tips. A one-off fault will also be a glitch. A trend is a diagnosis ready to come about.