

If you are living in Essex and your boiler does that secure, quiet element all winter, it's ordinary to omit there's extreme engineering in the casing. Then one chilly morning you get a fault code, a knock you on no account heard previously, or the heating begins behaving find it irresistible's interested in it. That's almost always while other folks appreciate a boiler seriously isn't a unmarried laptop, it's a machine of connected elements, and certainly one of the biggest jobs in a genuine provider is heat exchanger exams.

This is the part that separates a "nice to have" provider from a service that as a matter of fact reduces the percentages of a breakdown and, simply as importantly, helps to keep the boiler operating adequately and successfully.

Below is what a warm exchanger take a look at contains in truly existence, why it topics, what you need to expect from a powerfuble carrier go to in Boiler Service Essex, and the purple flags that let you know whatever isn't correct.

Why the warmth exchanger is the coronary heart of the boiler

In undeniable phrases, the warmth exchanger is where the burner warmth transfers into the water or significant heating circuit. That transfer has to manifest with consistent touch and accurate airflow, and it has to happen with out the combustion items getting the place they shouldn't.

Most boiler troubles that get dramatic many times hint again to one in all 3 things:

- warmth move gets decreased (so the boiler runs warmer or struggles to hit temperature)
- combustion runs out of stability (so soot, deposits, or incomplete burning will become more likely)
- power, water glide, or condensate coping with starts off performing up (so the components protects itself with faults)

The warmth exchanger sits precise in the center of all that. If it's sooted up, partly blocked, corroded, or tormented by condensation disorders, functionality drops. If combustion is off, deposits construct sooner and the exchanger works less effectively. If corrosion has all started, it might boost up and emerge as greater high priced to fix.

I've been on jobs in which a patron pronounced, "It's no longer damaged, it's just not as hot because it should always be." When you open the boiler, the warmth exchanger is coated in a sample that tells you combustion and cleanliness have been drifting for a long time. The boiler isn't failing straight, it's slowly dropping the means to do its process top.

What "warmth exchanger assessments" easily way on site

People usually think a service can be a few changes and a examine the pressure. A proper heat exchanger investigate is extra fingers-on. It consists of inspection for physical [Boiler Service Essex](#) circumstance and an comparison of combustion efficiency.

There are two angles to frame of mind this:

- 1. Visual and tactile inspection of the warmth exchanger surfaces and pathways**
- 2. Operational exams that present how the boiler is burning and transferring heat**

You may listen engineers speak about "sooting," "scaling," "corrosion," "flue merchandise," and "condensate." Those aren't buzzwords. They're observations that factor to a likely result in.

For illustration, if you happen to put off access panels and notice heavy soot deposits in puts where they shouldn't be, that could suggest incomplete combustion or limited airflow. If you notice signs and symptoms of corrosion or pitting, that features more in direction of chemical or water best complications, condensate difficulties, or long-term operation conditions.

In a state-of-the-art condensing boiler, condensation is component of long-established operation. The warmness exchanger is designed to deal with it. The difficulty is when condensate coping with is deficient, whilst acidity sits the place it shouldn't, or when the boiler is typically walking in situations that make deposits tougher to shift.

The favourite deposit tale: soot and scale

Deposits are rarely random. Their patterns inform you tons.

Soot deposits

Soot typically forms while combustion will never be totally whole, or when the burner and air grant are out of music. If you've ever noticed a fireside that smokes, soot is the similar concept, just in a greater controlled atmosphere.

Soot on the heat exchanger impacts performance since it creates an insulating layer. It also adjustments airflow and temperature gradients, that may result in extra inefficiency. A boiler can still run, yet it tends to war, cycle more pretty much, or hit temperature inconsistently.

On a provider talk over with, soot will never be just anything you "wipe off and go on." It needs to trigger a precise examine burner situation, seals, air consumption, flue direction, and the manner the boiler became burning.

Scale and limescale

Scale is ready minerals, and it continuously shows up extra in the formula water aspect. Even in a condensing boiler, if the water chemistry is off, or the formulation has been topped up ordinarily, scale can build.

Scale is less forgiving because it bodily blocks warmness move. You can clean a good number of soot from an exchanger, however heavy scale is also more durable to wholly dispose of devoid of professional chemical compounds and extra in touch work. That's wherein you'll see alternate-offs: every so often cleaning restores overall performance, commonly the ruin is already done.

I consider one case near Chelmsford wherein the buyer have been topping up the formulation each few months. The boiler became simplest a few years previous. When I inspected the heat exchanger, there were signals of mineral construct-up that didn't match the boiler's age. The proper hassle wasn't the boiler at all, it was once the method losing water and being refilled. In that situation, you're able to provider all you want, however the root result in continues bringing the comparable challenge again.

Corrosion and what it tells you

Corrosion is the only that makes engineers take a step back. It might possibly be resulting from condensate issues, water caliber considerations, or running prerequisites that save components moist longer than they have to be.

In a condensing boiler, condensate is designed to run away effectively. The limitation is while the condensate pathway is partially blocked, the condensate entice is inaccurate, or there's a flue or drain configuration problem. If condensate backs up or doesn't discharge thoroughly, it may possibly sit and devour away at surfaces.

Corrosion might also come from water exceptional difficulties inside the principal heating circuit. If inhibitors should not used, if the incorrect inhibitor is used, or if the system is repeatedly replenished with untreated water, you get a numerous sort of wear and tear.

A impressive warmth exchanger money doesn't simply say, "It's corroded." It tries to take into account why. If the cause remains to be gift, the exchanger can degrade quicker than it should.

Combustion tests that pair with the warmth exchanger inspection

Heat exchanger condition is one half of the story. The different half of is how the boiler performs during operation. This is where the service technician will frequently do combustion analysis. That's no longer a "good addition," it's a center safe practices and potency money.

During a basic service, an engineer will take measurements that point out how full the combustion is, what the flue gases appear like, and even if the boiler is burning inside of dependable parameters. If the ones measurements are off, it might explain soot construct-up or explain why the heat exchanger is underperforming.

Without getting overly technical, the theory is that the heat exchanger must always get hold of the precise quantity of heat from the burner, although the flue components properly removes combustion by using-merchandise.

If the boiler is operating "hotter than it needs to be" or "burning inefficiently," that you can prove with deposits that build in a timely fashion, which include on the warmth exchanger.

The functional matters that in many instances prove up all over warmth exchanger checks

Even though the warmth exchanger is the focus, you hardly ever get to look at it devoid of noticing appropriate important points. In Essex, I see a few styles extra usually than others, no longer when you consider that the subject is one-of-a-kind, however because houses here range quite a bit: older terraces with older flues, landlords who favor minimal downtime, and homes which were because of storms, damp episodes, or DIY flue reroutes.

Here are the lifelike areas that connect strongly to warmth exchanger wellbeing:

- **Burner condition and ignition efficiency:** A worn burner or inconsistent ignition can create imperfect combustion. The outcome is additionally soot that builds on the warmth exchanger.
- **Flue integrity and sealing:** Leaks or bad seals can introduce atypical combustion conditions. Those situations can inspire deposit formation.
- **Fan performance and air tension keep watch over:** A fan that doesn't movement the properly air volume results in a dangerous blend, which again can suggest incomplete combustion.

- **Condensate direction:** Blockages, unsuitable pipe falls, or misrouted condensate pipes can result in acidic condensate sitting in the flawed areas.
- **System circulate and move:** If the boiler struggles to get water shifting correct, heat move suffers. It may additionally make the boiler cycle greater, which affects general operation.

These aren't separate complications. They're items of the comparable image. A warmth exchanger take a look at is honestly about confirming that the boiler's whole combustion and move activity is staying in balance.

How a warm exchanger test affects potency and bills

Efficiency is a great deal in Essex seeing that vigor expenses should not a "in the future hardship." The boiler is probably the most foremost vigour clients in most properties.

When the warmth exchanger is sparkling and operating appropriately, the boiler can extract warmth from combustion gases appropriate. If the heat exchanger is coated in deposits, the boiler has to compensate. That reimbursement can educate up as longer run occasions, greater biking, and now and again larger call for from the thermostat to succeed in the same relief level.

The difficult facet is that you possibly can believe "much less warmth" for many purposes that usually are not warmth exchanger deposits. Pump concerns, equipment balancing, radiators with trapped air, and diverter valve problems all can slash heating output.

This is why the excellent frame of mind will never be "continually blame the exchanger." A real service technician combines your warning signs with the inspection and combustion diagnosis, then types a judgement. Sometimes the warmth exchanger is the wrongdoer. Sometimes it's portion of a much wider difficulty, and the heat exchanger simply exhibits the bigger trigger.

What you needs to look forward to throughout the time of a Boiler Service Essex visit

If you're reserving Boiler Service Essex, you choose the engineer to act like the boiler is defense-significant kit, due to the fact it truly is. You also need them to make an effort to research, not just tick bins.

Here are just a few "tell" signals from the means an engineer works that that you may use to gauge quality.

The engineer asks approximately overall performance and fault history

A first rate technician will ask questions like: has the boiler been locking out, has it been noisy, does it run incessantly or short cycle, has any one been topping up the gadget, and how long has any up to date symptom been occurring.

That context matters. If you say the heating has been dropping pressure every month, corrosion or scale becomes an extremely applicable line of enquiry for the warmth exchanger.

The heat exchanger inspection isn't rushed

You may not see every level, but if an engineer is in reality establishing the appropriate panels, checking the condition, and not simply brushing round with the vacuum and ultimate up, that's a fair signal.

A warm exchanger payment may want to cause an statement. Even if the consequence is "it's in extraordinary situation," the engineer have to be ready to aspect you to the reasoning.

Combustion assessments are measured, now not guessed

If they're not taking combustion readings, or they don't explain what they found, you're less likely to uncover the appropriate intent of soot, incomplete burning, or efficiency loss.

The engineer pays interest to condensate

Condensate is easy to miss as it's small and it's out of sight in many installs. But if the condensate course has topics, the heat exchanger will pay the value over time.

A quick, fair tick list that you may use

You don't need to be an engineer to recognise even if the noticeable constituents are becoming addressed. Use this as a fast booklet for what you expect to hear and what you must always be furnished.

- Visual inspection of the warmth exchanger circumstance, which include signals of soot, corrosion, or scale
- Combustion diagnosis all over operation to verify trustworthy and powerfuble burning
- Checks at the burner and air deliver formulation that influence deposit build-up
- Inspection and confirmation of condensate discharge path and capture circumstance
- Safety checks and documentation, together with what become adjusted and what readings had been recorded

If your reserving is lacking such a lot of this, it will nonetheless be a "carrier," yet it's no longer the more or less provider that protects the warmth exchanger correct.

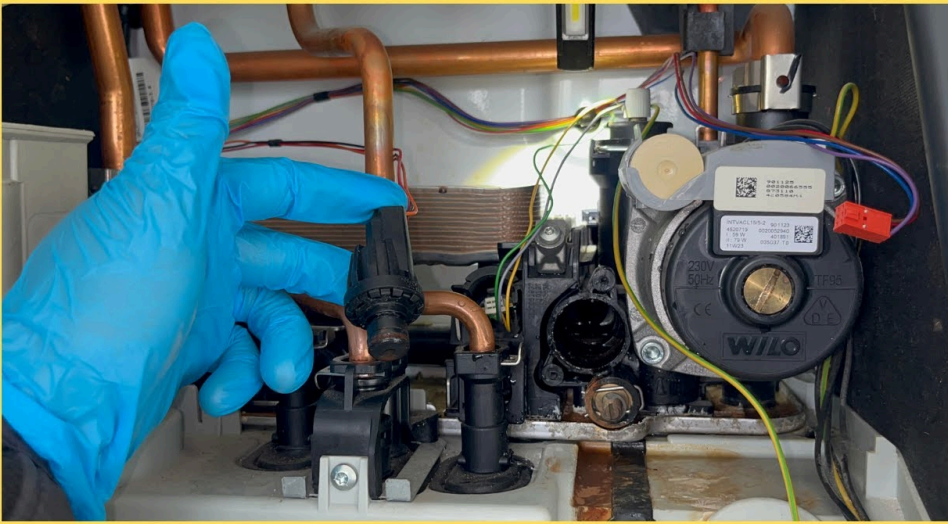
What happens if the heat exchanger is closely sooted or corroded?

This is in which folk desire an instantaneous reply: "Can it's mounted?" The truth is more nuanced.

A pale layer of deposits may clean up with hobbies servicing and recognition to burner and combustion settings. If the exchanger is carefully sooted, the engineer may well put forward extra thorough cleaning and will also seriously look into what caused it, like air force complications, fuel deliver issues, or flue restrictions.

Heavy sooting is a caution. In many situations, it manner the boiler has been out of combustion steadiness for longer than you'd guess from symptoms on my own. The technician may want to ultimate the underlying quandary, not simply fresh the floor.

Corrosion differences the choice. If corrosion is massive or structural, cleaning can't restoration what's gone. The boiler might nevertheless run for your time, but it becomes a reliability and safe practices query. Engineers will normally recommend a repair or alternative depending on how negative the spoil is, age of the boiler, and the rate effectiveness of added paintings.



The key factor: you don't would like a technician to disregard exchanger condition seeing that "it's still heating." The warm exchanger is some of the ingredients wherein the distinction between "running" and "securely working for years" turns into obtrusive.

Heat exchanger assessments and the awkward edge cases

Boilers do no longer invariably fail in neat, textbook tactics. Some conditions make warmth exchanger inspection more difficult or make the signs misleading.

Short biking that elements in diverse directions

A boiler that brief cycles may have an air component inside the process, a pump limitation, a diverter situation, or a keep watch over obstacle. Heat exchanger deposits can make a contribution through chopping heat switch, yet it's not often the purely suspect.

In these cases, the engineer has to be cautious no longer to lock onto one theory. Combustion readings and operational observations help resolve regardless of whether the exchanger is definitely contributing.

Condensate difficulties which might be intermittent

Sometimes condensate discharge works best unless the weather shifts or until the boiler is administered for an extended continuous length. You would possibly merely see indications after an extended name.

A exact technician assessments condensate pathways right, not just "it looks transparent." They also use sense to realise the place blockages pretty much manifest, like trapped condensate in designated pipe runs or wrong angles which may gather water.

Systems that retailer dropping pressure

If a belongings has a leak and helps to keep being topped up, corrosion and scale probability increases. Heat exchanger assessments may possibly expose put on patterns consistent with poor water chemistry and repeated replenishment.

Here, the perfect "provider cross" just isn't solely cleaning the boiler. It's making certain the basis challenge is addressed, or else the related put on cycle repeats.

How most likely have to heat exchanger tests occur?

A boiler provider is in general annual in most families, and that timing is wise on account that heat exchanger circumstance alterations gradually. Deposits construct over the years, condensate pathways can glide toward blockages, and combustion steadiness can shift.

If you've a boiler that runs continually, a property with negative water exceptional, or a domicile where the boiler has a heritage of fault codes or sootiness, you're able to need more attention than the minimal annual activities.

But the exact frequency should be guided by what the engineer unearths. The exchanger circumstance and combustion readings are the factual alerts, now not the calendar on my own.

What to invite in the event you book your service

When you booklet, which you can shop yourself time by means of asking a couple of questions up entrance. A just right dealer should always be secure answering them, and their responses will have to tournament how engineers correctly paintings.

You can ask even if they'll do combustion prognosis, regardless of whether they look into the warmth exchanger situation promptly, and how they record the readings and any findings. You also can ask what they suggest if they discover indications of corrosion or heavy soot.

If they reply with widespread reassurance and no specifics approximately assessments or measurements, take that seriously. Heat exchanger assessments are not approximately imprecise promises. They're approximately inspection and facts.

The backside line for Essex homeowners

A boiler's heat exchanger is one of the vital primary reasons a boiler can avoid handing over trustworthy warm with no turning out to be a protection fret or an potency drain. During a proper Boiler Service Essex discuss with, warmth exchanger exams have to suggest more than a fast glance. They should still pair inspection with combustion prognosis, and they should incorporate condensate and combustion associated substances that effect deposit construct-up and corrosion menace.

If you've been burned via functions that felt rushed, this can be the part to recognition on. A boiler carrier that proper tests the heat exchanger presents you anything you can still suppose months later, fewer faults, steadier heating, and a boiler that runs like it's imagined to.

And if you ever spot indications like multiplied noise, ordinary fault codes, bizarre soot, or a important drop in warmthness output, don't treat it as "one extra issue to wait on." The warmthness exchanger ordinarily starts telling the fact lengthy formerly the boiler solely supplies up.