

Outdoor lighting selections tend to look simple on a screen and surprisingly made complex on a genuine house. A hair that feels comfortable in an item image can disappear versus dark block. A vivid color-changing [custom permanent LED lighting installation](#) configuration that looks amazing in a showroom can really feel loud on a quiet colonial facade. The majority of property owners are not really picking between "old" and "new" lights. They are picking what type of mood they want their home to job, just how much versatility they need, and just how much interest they want the lights itself to demand.

That is why the dispute between traditional cozy soft lights and brilliant shade LEDs is worth slowing down for. The best answer is seldom concerning which one is better in the abstract. It has to do with style, neighborhood context, everyday use, holidays, upkeep expectations, and individual taste. I have seen homes changed beautifully by both strategies, and I have additionally seen expensive setups really feel wrong since the illumination design combated the personality of the home.

If you are thinking about Permanent LED Lighting Installation, or considering changing seasonal strings with Permanent Holiday Lights, the decision gets even more important. A short-lived error boils down in January. An irreversible system remains noticeable year-round and becomes part of your home's identity.

What timeless warm soft lights really do well

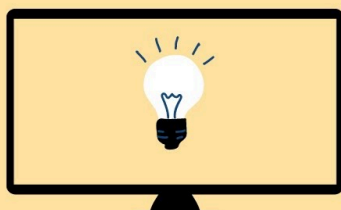
Classic Warm Soft Lights have staying power for a factor. They flatter homes. They produce depth without swiping the whole scene. The shade temperature, typically in the warm white range, releases a candlelit or incandescent feel that most individuals naturally read as welcoming.

On conventional homes, especially block colonials, craftsman cottages, farmhouses, and cape cods, warm light commonly seems like it belonged there from the get go. It lays out rooflines delicately, softens sharp fascia edges, and makes landscaping really feel more complete after dark. Even when the component technology is modern-day, the result nods to the kind of holiday illumination people remember from childhood. That knowledge matters greater than many purchasers realize.

Warm white additionally often tends to be forgiving. If your roofline has several tops, dormers, or unequal elevations, softer lighting can smooth visual shifts that brilliant saturated shades often tend to exaggerate. The exact same holds true if your residence has blended materials like rock, stucco, and home siding. A cozy wash can merge those surfaces rather than making every appearance complete for attention.

10 HOURS 

WARM SCREEN



LAMP

There is additionally the issue of daily usage. Several home owners at first purchase vacation impact, then understand their permanent lights will invest most of the year doing various other work. They want a refined night radiance in summer season, a polished look for supper celebrations, or sufficient accent illumination to make your home feel inhabited when they are away. Warm white manages those moments with dignity. It reviews as architectural lighting, not occasion lighting.

That does not indicate cozy white is constantly understated. On the appropriate residence, it can look crisp, high end, and pricey. A clean roofline traced in soft cozy LEDs can boost aesthetic charm in such a way that brilliant colors usually can not, just since it feels intentional instead of novelty-driven.

Where brilliant shade LEDs have an actual advantage

Bright shade LEDs bring versatility that warm white alone can not match. If you want one system to take care of Xmas, Halloween, birthday celebrations, college graduation parties, game days, and neighborhood occasions, color-changing LEDs are hard to beat. With a quality controller and thoughtful shows, you can shift your entire outside search in seconds.

That flexibility is specifically appealing for households who enhance often. Rather than climbing ladders and exchanging light bulbs or hanging new hairs for every single celebration, they tap a phone and modification scenes. Red and environment-friendly in December, orange and purple in October, patriotic combinations in July, school shades for an elderly evening, pink or blue for an infant news. The ease is not trivial. Once home owners experience it, lots of never ever intend to go back to unboxing bins of seasonal lights.

Bright shade LEDs can also fit more modern homes remarkably well. On modern-day elevations with dark trim, steel roofs, sharp geometric lines, and large windows, saturated shade can really feel clean and intentional. The house itself already has visual boldness, so the lights can lug more powerful contrast without looking out of place.

There is also a functional side to shade that individuals in some cases forget. Brilliant LEDs are much more noticeable from a range. If your home rests deep off the street, on a huge lot, or behind mature trees, strong shade output might read much better than warm white. In neighborhoods where exterior screens are part of the culture, bright programmable lights can assist your house participate instead of fade right into the background.

Still, this is where restriction matters. A capable lights system does not mean every night should appear like a theme park. The house owners that stay happiest with brilliant color LEDs are generally the ones who utilize them precisely. They appreciate the strong settings for unique minutes and maintain a calmer default for the remainder of the year.

The home itself ought to get a vote

A lights design need to support the architecture, not subdue it. This sounds evident, however it obtains shed once people begin shopping by attribute list.

Traditional architecture frequently reacts best to heat. If the home has shutters, divided-light windows, all-natural stone, cedar accents, or a front patio with columns, warm soft lights generally boosts those information rather than squashing them. The eye notices the form of your home first, then the lights.

Homes with basic rooflines can go either way. A ranch, for example, can look magnificently downplayed in warm white or tidy and festive in color, depending on landscape design and exterior coating. The exact same is true for country two-story builds with neutral siding and black trim. These homes are versatile canvases.

Contemporary residences are where intense shade LEDs usually make the toughest case. The style is currently graphic. Direct light can emphasize roofing system sides, parapets, and modern-day entrances with accuracy. Yet even there, a permanent system needs to consist of white tones. A house that can just talk in saturated color ends up being tiring over time.

The roofline matters also. Complicated roof covering geometry can make bright shade appearance fragmented if each segment checks out as a different aesthetic signal. Cozy white often tends to stitch those segments with each other. On the other hand, a basic gable or long straight fascia can handle more powerful color with much less chaos.

I usually tell property owners to envision the lights on an arbitrary Tuesday in March. Not Christmas Eve, not Halloween weekend break, just an average night. If they can picture your house looking excellent in that moment, they are more detailed to the appropriate choice.

Mood is not a small detail

People ignore exactly how deeply lighting affects feeling. Color temperature level and strength transform the whole social message of a home.

Warm soft light suggests calmness, friendliness, and permanence. It says the house is taken care of. It really feels worked out. You see this most clearly in areas where individuals stroll in the evening. A warm-lit house often tends to add to the road as opposed to perform for it.

Bright shade lighting communicates energy. At its finest, it really feels celebratory and meaningful. It can be truly fun, specifically for households with children or house owners who delight commonly. At its worst, it can really feel agitated. If every night is high-saturation blue, red, or eco-friendly, the eye never ever obtains a place to relax.

This is not simply a matter of preference. It impacts how typically you will actually use the system. House owners that believe they desire optimal brightness in some cases find they only appreciate it for short bursts. After a few weeks, they start calling points down. That is one reason a lot of costs long-term systems are ultimately readied to cozy white or very soft pastel scenes the majority of the year, even when they are totally with the ability of creating vivid color.

Brightness, glare, and why installation top quality matters so much

A common blunder is judging a lights design without separating it from installation top quality. Poor placement can make any type of light appearance poor. Cozy white can show up weak or patchy if spacing is inconsistent. Brilliant shade LEDs can look harsh if the diodes are revealed straight to the street instead of tucked into a soffit or track developed to conceal them.

With Permanent LED Lighting Setup, the visual result depends upon greater than bulb shade. Spacing, light beam angle, mounting setting, controller high quality, and dimming capacity all matter. An intense system with appropriate dimming can provide you both lively vacation scenes and tasteful low-level every night lighting. A low-cost system with minimal control commonly leaves you selecting between too intense and off.

If your home encounters next-door neighbors at close quarters, glare must become part of the conversation from the start. Saturated LEDs aimed improperly can mirror off windows, jump off light-colored home siding, or create uneasy hotspots. Warm soft lights are not unsusceptible to this, however they are usually much easier to soften.

A properly designed irreversible system ought to disappear throughout the day as long as feasible. Tracks should match trim or fascia. Electrical wiring ought to be hidden. Placing ought to respect roof sides and water drainage

paths. The cleanest work are the ones you barely notice until evening.

Cost is not just about the ahead of time number

When individuals compare traditional warm strings to programmable LEDs, they often frame it as cost versus deluxe. Reality is extra complicated.

Traditional seasonal lights can be less expensive at the point of acquisition, yet they likewise feature recurring labor, storage, substitute light bulbs, extension cord administration, and the annual ritual of hanging and eliminating them. For some houses, that initiative is part of the period. For others, it comes to be the reason they quit enhancing at all.

Permanent Vacation Lights cost even more in advance, particularly if skillfully installed, but they shift the economics gradually. You are spending for framework, toughness, comfort, and control. If you already spend on seasonal setup every year, an irreversible system might make economic sense quicker than anticipated. If you commonly throw up a couple of economical strings yourself and appreciate doing it, the repayment is much less obvious.

There is also a resale and aesthetic appeal angle, though it ought to not be overemphasized. A stylish long-term system can make a home really feel much more finished and easier to maintain. A garish or poorly installed one can do the contrary. Customers reply to the impact, not just the attribute list.

How communities shape what works

Lighting does not exist in a vacuum cleaner. The same setup can really feel excellent in one neighborhood and out of action in another.

On wooded great deals, warm soft lights frequently looks particularly solid due to the fact that it matches natural surroundings. Against mature trees and darker backgrounds, your house glows as opposed to blinking. In thick class where holiday participation is high, brighter shades might feel much more at home. In upscale areas with meticulously kept exteriors and strong building character, subtlety normally wins even more adoration than intensity.

Homeowners organizations can additionally influence the decision. Some have regulations regarding visibility, shade usage, or just how long-term components might be installed. Even where there are no formal limitations, informal area standards issue. If every home neighboring usages limited white accent lighting, an aggressively bright rainbow establishing every weekend break may not land the method you hope.

That stated, there is no need to squash your individuality to match every person else. The better strategy is variety. A good system lets you celebrate when you want and blend in when you prefer.

A functional method to select in between the two

If you are torn, do not start with item pamphlets. Beginning with exactly how you live.

Ask yourself a few uncomplicated inquiries:

1. Do you want your home to really feel sophisticated most nights, or festive most nights?
2. Will you genuinely utilize shade scenes typically, or a handful of days each year?
3. Is your home's style traditional, transitional, or modern?
4. Are close next-door neighbors likely to see the lights head-on?

5. Do you desire the system generally for holidays, or for year-round curb appeal?

Those inquiries typically make clear the answer promptly. A homeowner that values ageless curb charm, subtle night atmosphere, and wide architectural compatibility is typically happiest with Classic Warm Soft Lights or a color-capable system that defaults to warm white. A home owner who loves seasonal expression, delights regularly, and desires one arrangement for lots of events will likely value intense shade LEDs, provided the system likewise lowers well and consists of classy white settings.

The middle ground that serves most homes best

The smartest selection for many homes is not strictly one camp or the various other. It is a premium irreversible system capable of intense colors, utilized with discipline and programmed around cozy white as the baseline.

That crossbreed method works since it mirrors just how individuals actually live. They desire a stunning everyday look, yet they additionally want the fun alternative offered. The method is seeing to it the irreversible daytime appearance is clean and the nighttime default is livable.

Here is where several specialist installers steer experienced clients:

|Priority|Best healthy||-- |--|| Ageless visual charm|Cozy white focus|| Regular vacation adjustments|Color-capable LEDs|| Traditional architecture|Warm white, reduced glare|| Modern design|Color-capable, carefully programmed|| Everyday use all year|Dimmable warm or tunable white standard|

A tunable or programmable system can bridge the void if it has sufficient control. Warm white for the majority of nights, richer brownish-yellow for fall, crisp great white for certain winter looks, and dazzling holiday color when the calendar requires it. The worth depends on having alternatives without really feeling obligated to make use of all of them all the time.

Mistakes house owners regret

The regrets are incredibly constant, and they are seldom about selecting LEDs versus typical style in the abstract. They originate from mismatch.

Some house owners select intense color exclusively due to the fact that the application looked exciting, then find they primarily desire a calm every night radiance. Others pick cozy white due to the fact that it really feels secure, after that desire they had more adaptability as soon as birthday celebrations, team events, and vacations roll about. A few install visible hardware that interferes with the roofline in daytime, which bothers them much more than the nighttime impact pleases them.

The most typical remorse, though, is overshooting brightness. Outside lighting has a way of intensifying during shopping. On set up day, brighter seems much better. A month later, people want dimming, softer scenes, and much less glow spilling right into bedroom home windows. It is much easier to raise strength on unique events than to live with a system that always feels aggressive.

Another mistake is falling short to test colors against the actual home exterior. Red brick can misshape certain tones. Off-white home siding can make warm whites check out yellow. Deep charcoal exteriors can swallow low-output setups. Item examples issue since homes are not neutral backdrops.

What fits your home best

If your home leans typical, if you care most about aesthetic appeal, and if you want lighting that looks good far past the holidays, traditional cozy soft lights are the safer and frequently more lovely choice. They mature well, flatter a large range of products, and develop the kind of welcome most property owners never tire of.

If your home celebrates typically, takes pleasure in altering scenes, and wants a lighting system that can pivot from underrated to spirited, brilliant color LEDs supply actual benefits. The trick is selecting a system with solid lowering control and using it with a bit of restraint.

For several homes, the most effective response is a long-term configuration that can do both, with cozy soft light as the daily foundation and color reserved for minutes that deserve it. That offers you the polish of building lighting and the adaptability of Long-term Vacation Lights, without compelling your home into one mood every evening of the year.

A home does not need to yell to really feel unique. It simply needs lights that matches its character, supports the way you live, and still looks right when the uniqueness diminishes. When that equilibrium is right, the lights quit seeming like a decor and begin seeming like component of the home.